

## VIPA 300S, for ex. 315-4NE12 (Ethernet)

### HMI Setting:

Parameters	Recommended	Options	Notes
PLC type	VIPA 300S, for ex. 315-4NE12 (Ethernet)		
PLC I/F	Ethernet		
Port no.	102		
PLC sta. no.	1	0-31	

### Device Address:

Bit/Word	Device type	Format	Range	Memo
B	I	DDDDo	0 ~ 99997	Input (I)
B	Q	DDDDo	0 ~ 99997	Output (O)
B	M	DDDDo	0 ~ 99997	Bit Memory
B	DBnBit	FFFFFFDDDDo	0 ~ 6553599997	Data Register Bit
B	DBxBit	FFFFFFDDDDo	0 ~ 10700655327	
B	DB0Bit-DB99Bit	DDDDDo	0 ~ 655357	Data Register Bit
W	IW	DDDD	0 ~ 9999	Input (I)
W	QW	DDDD	0 ~ 9999	Output (O)
W	MW	DDDD	0 ~ 9999	Bit Memory
DW	MD	DDDD	0 ~ 9998	Bit Memory Double
DW	MD_Anyaddr	DDDD	0 ~ 9998	Bit Memory Double Word
W	DBn	FFFFDDDD	0 ~ 40969999	Data Register (must be even)
DW	DBDn	FFFFDDDD	0 ~ 655359999	Data Register Double Word
W	DBn_String	FFFFDDDD	0 ~ 655359999	
DW	DBDn_String	FFFFDDDD	0 ~ 655359999	DW
W	DB0 ~ DB99	DDDDD	0 ~ 65535	Data Register (must be even)
Byte	MB	DDDD	0 ~ 9999	Bit Memory Byte
Byte	DBBn	FFFFDDDD	0 ~ 655359999	Data Register Byte
Byte	DBBx	FFFFDDDD	0 ~ 1070065535	
W	DBx	FFFFFFDDDD	0 ~ 1070065535	
DW	DBDx	FFFFFFDDDD	0 ~ 1070065535	

DW	DBDn_Anyaddr	FFFFFDDDD	0 ~ 655359999	Data Register Double
W	DBx_String	FFFFFDDDDD	0 ~ 1070065535	
W	DBn_String1	FFFFFDDDD	0 ~ 655359999	
W	DBx_String1	FFFFFDDDDD	0 ~ 1070065535	
DW	DBDx_String	FFFFFDDDDD	0 ~ 1070065535	

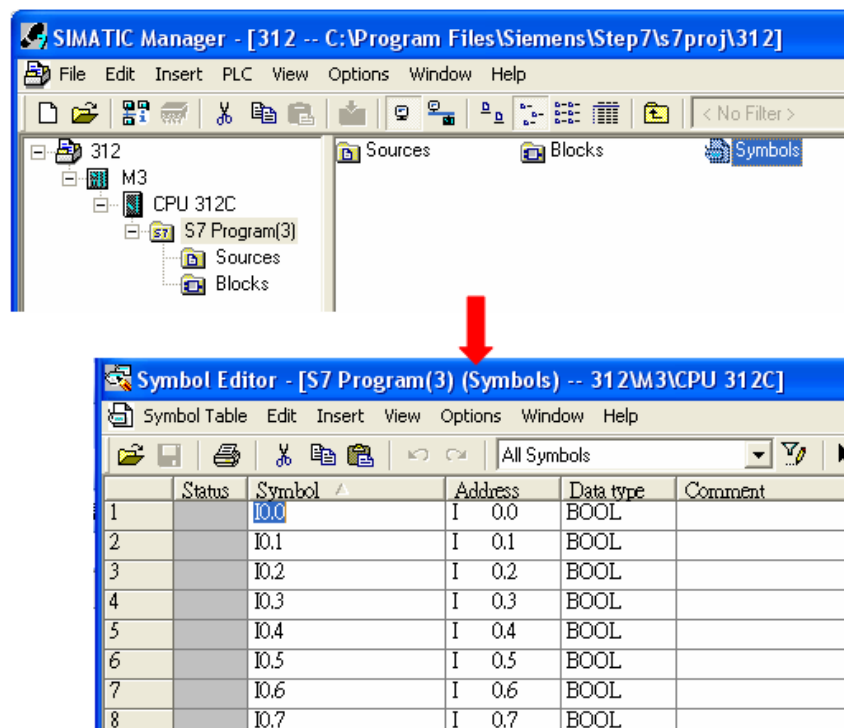
- Double word and floating point value must use DBDn device type.

## How to Import Tag:

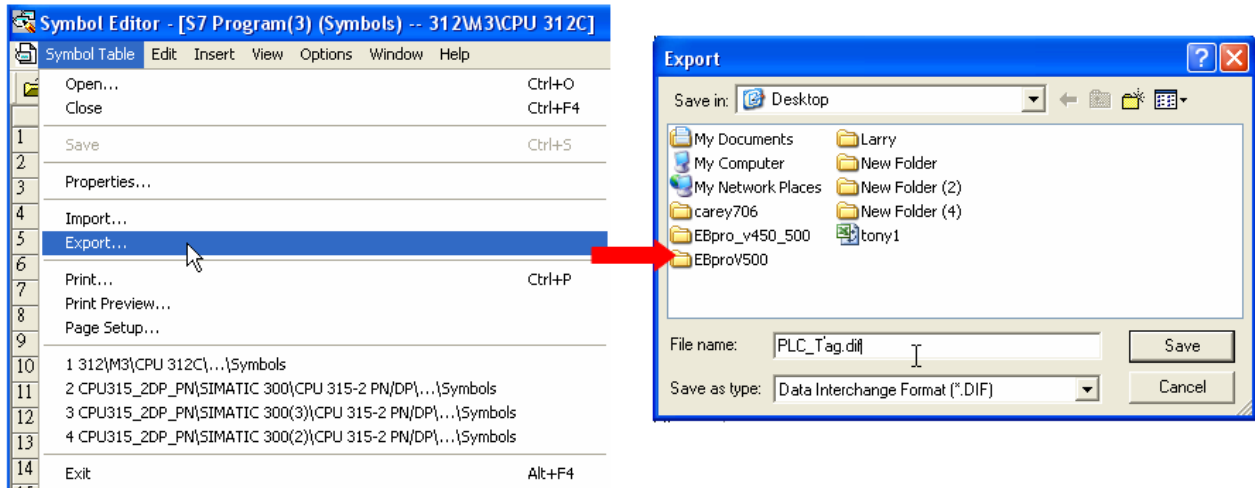
SIEMENS STEP 7 program allows building files of user-defined tag (\*.dif file and \*.AWL file), and import these files in EasyBuilder8000/EasyBuilderPro -> System Parameter Settings. The following describes how to build and import these two types of files.

### 1. Building \*.dif File

- a. In "Symbols" create user-defined tag.

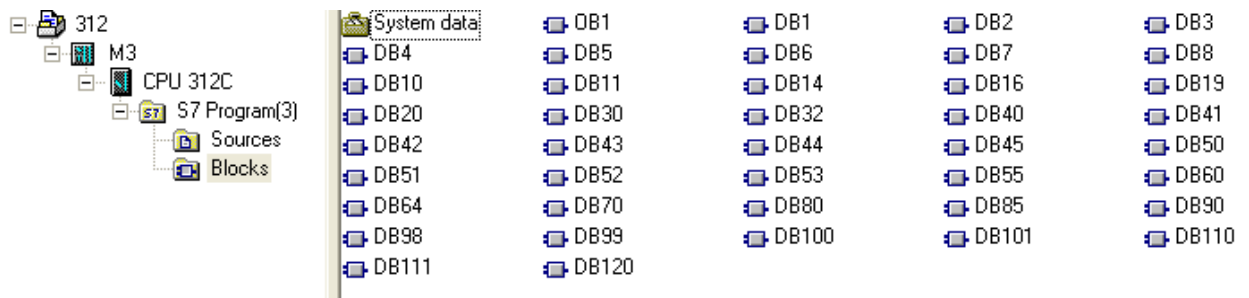


- b. Click **Export** to export the edited file and click **Save**.

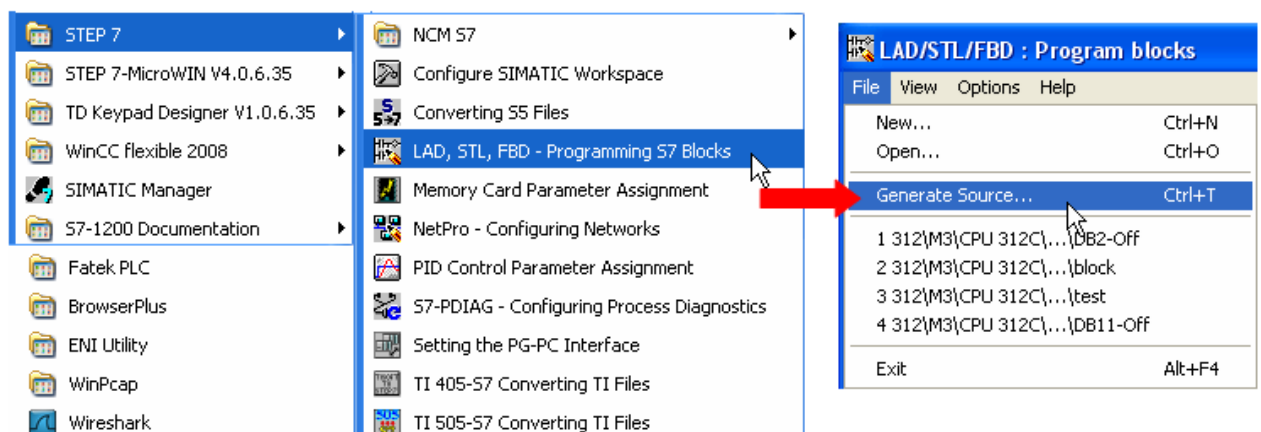


## 2. Building \*.AWF File

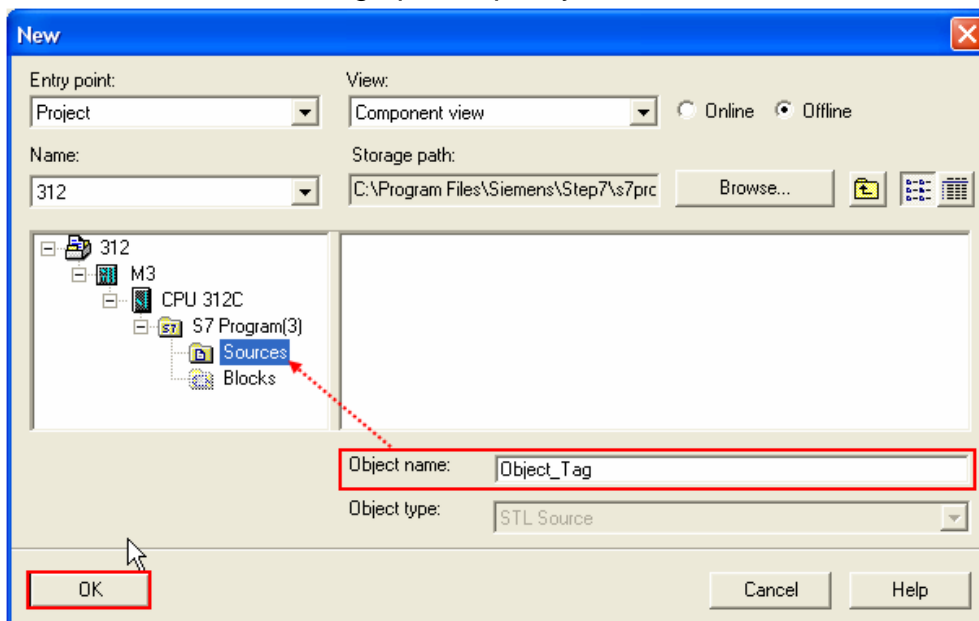
a. In **Blocks** create items as shown below:



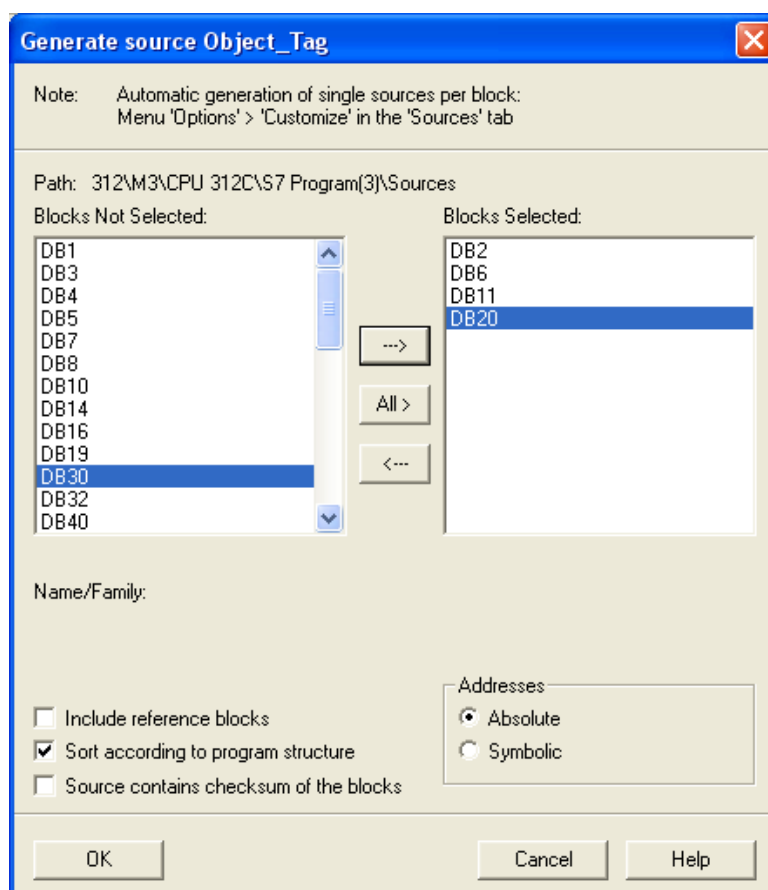
b. Open **LAD/STL, FBD – Programming S7 Blocks**, click **File -> Generate Source**.



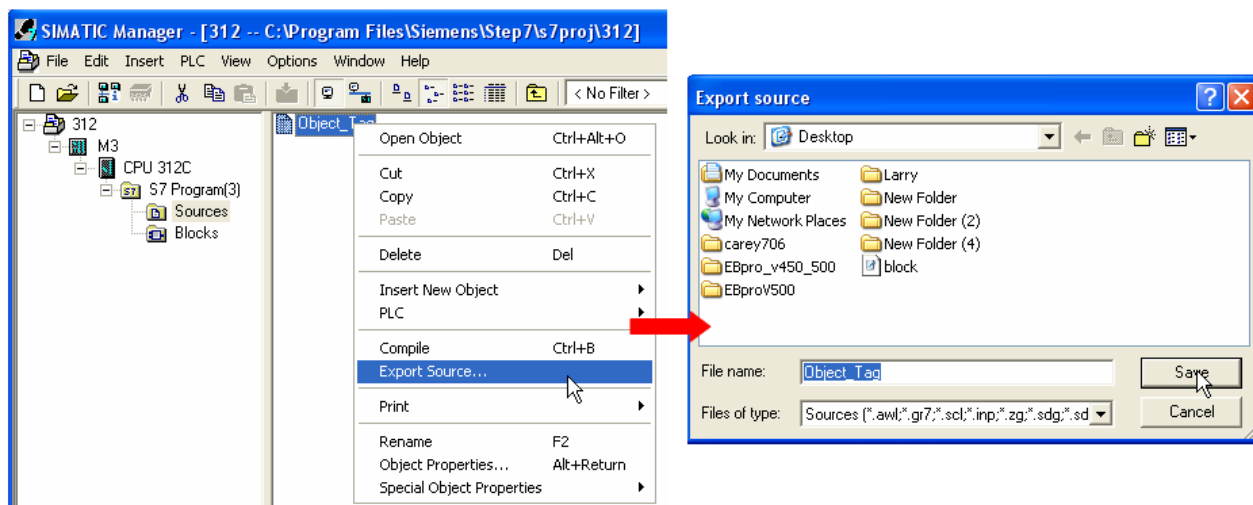
- c. Select **Sources** as storage path, specify the file name then click **OK**.



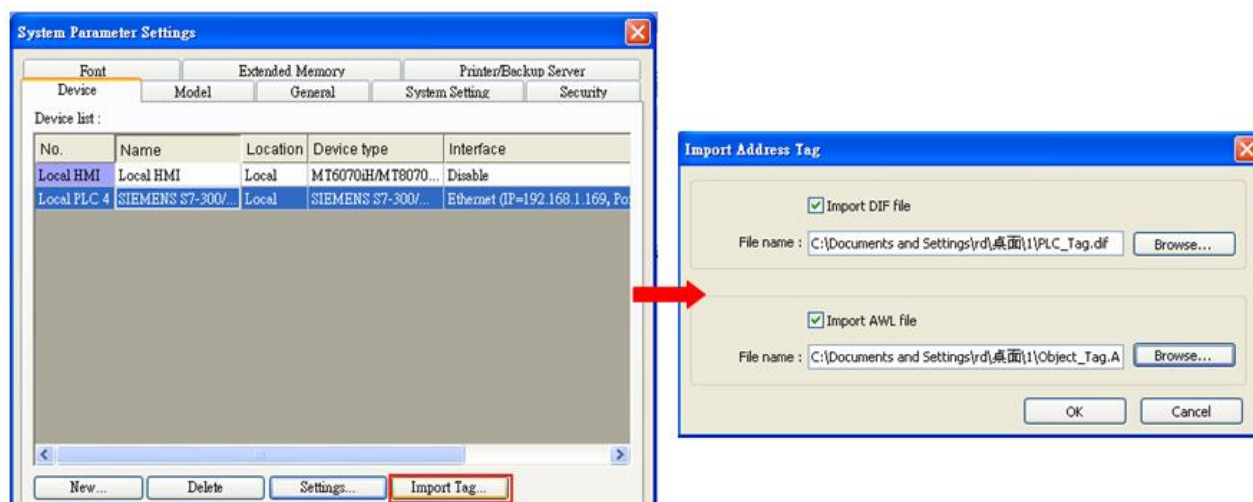
- d. Select the objects to be exported then click **OK**



- e、 Under **Sources** there will be names of the saved files, select **Export Source** to build \*.AWL file.



The generated \*.dif and \*.AWL files can be imported in EasyBuilder8000/EasyBuilderPro **System Parameter Settings**, by clicking **Import Tag**.



Tag information successfully imported.



## Wiring Diagram:

### Ethernet cable:

